



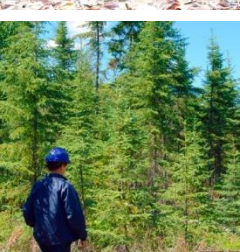
Gravure Association of America 2009 Environmental Workshop

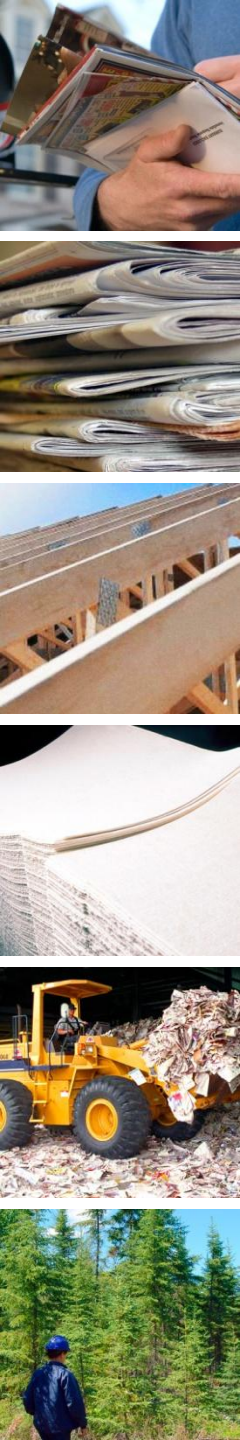
June 18, 2009

abitibibowater.com

Sustainability Roadmap

- **Reduction of environmental footprint**
 - Diminish waste and ensure responsible use of resources, particularly fiber, energy and water
- **Climate change**
 - Strive to operate as a carbon-neutral enterprise
- **Responsible fiber sourcing**
 - Produce paper and wood products with fiber originating from our certified sustainable forests or other woodlands suitably managed through third-party certified tracking systems
- **Product stewardship**
 - Offer innovative and best-in-class products to support customer environmental expectations
- **Stakeholder relations**
 - Engage stakeholders to better leverage opportunities and resolve challenges





Climate Change and Energy Optimization

- 52% reduction of absolute carbon emissions since 2000, 31% on a per-metric-ton basis, through improvement in energy efficiency and increased use of biomass
- 47% self-sufficiency for total energy needs using renewable sources
- 3 Canadian mills certified “green energy” producers, including 2 under the Canadian EcoLogo program

16 hydroelectric facilities

– 466 megawatts

7 cogeneration facilities

– 348 megawatts

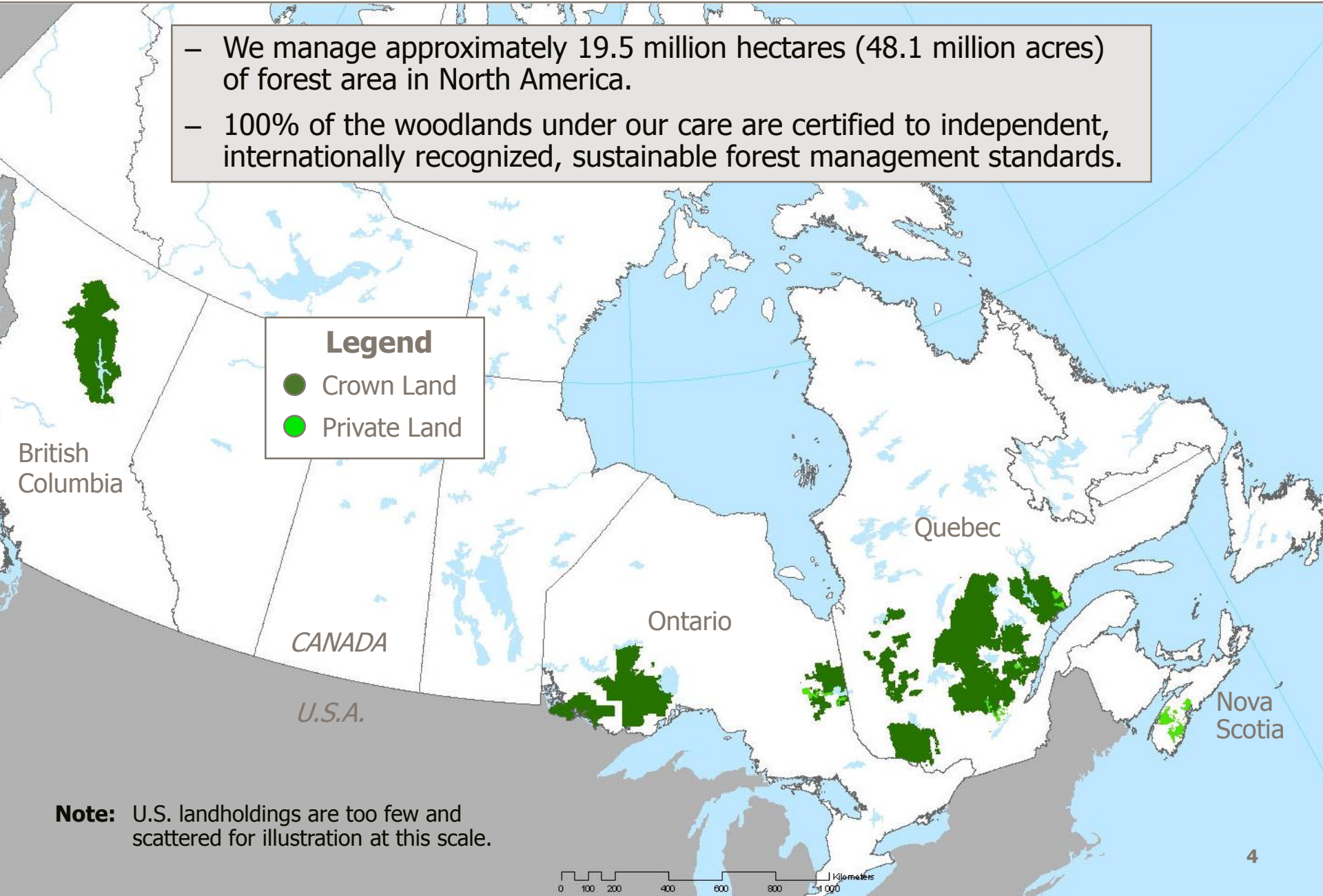
Total installed capacity

– 814 megawatts

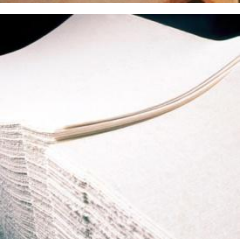


Map of Managed Land

- We manage approximately 19.5 million hectares (48.1 million acres) of forest area in North America.
- 100% of the woodlands under our care are certified to independent, internationally recognized, sustainable forest management standards.



Note: U.S. landholdings are too few and scattered for illustration at this scale.



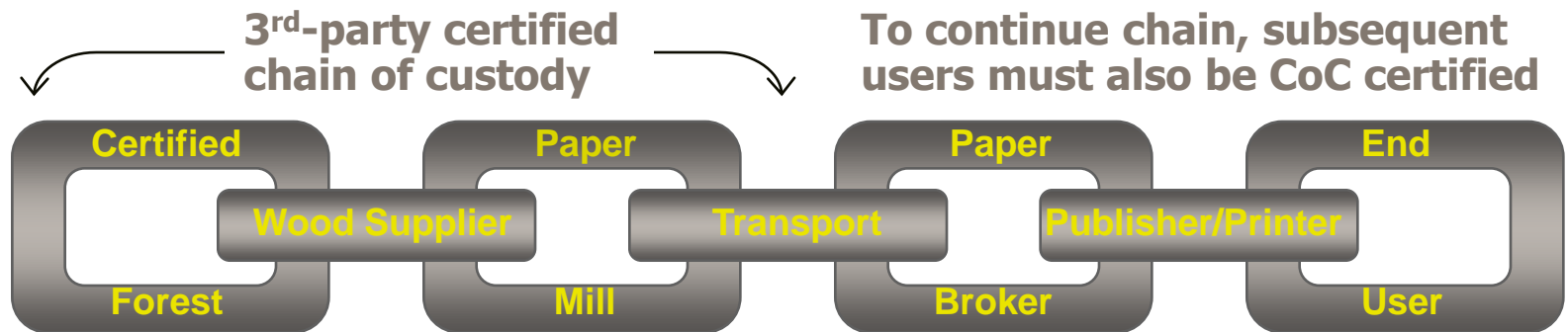
Sustainable Forest Management (SFM) Certification

- **Verification by a third party that:**
 - forests are well-managed (as defined by a given standard)
 - wood comes from responsibly managed forests
- **AbitibiBowater has an “inclusive” policy, promoting the use of multiple SFM standards such as CSA, SFI and FSC.**
 - 100% of all managed woodlands operations in Canada and the United States are audited and certified by independent third parties.
 - With 19.5 million hectares (48.1 million acres) certified, AbitibiBowater is among the largest SFM certificate holders in the world.



Chain of Custody (CoC) Certification

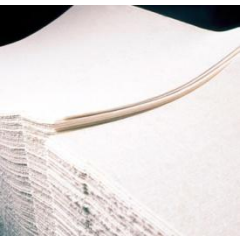
- A documented paper trail tracing a mill's fiber from its origin through the manufacturing process



- 12 mills third-party certified to CoC standards; others in the process of obtaining certification



Product Stewardship



- Committed to manufacturing more innovative products with a lighter environmental impact
- Ecopaque™, Ecopaque Laser™, Ecolaser™
 - Use 50% less wood fiber than freesheet papers
 - Manufacturing process uses hydroelectricity, thereby reducing consumption of fossil fuels and lowering GHG emissions by 75%
 - Require fewer chemicals during manufacturing process
 - Manufactured totally chlorine-free



ECOPAQUE **ECOLASER** **ECOPAQUELASER**
EQUALOFFSET **HYBRID**
ALTERNATIVE OFFSET **ALTERNATIVE BOOK** **ALTERNATIVE OPAQUE**

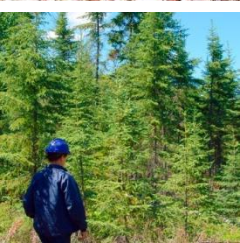
Recycling and Recovered Fiber

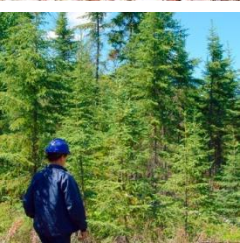
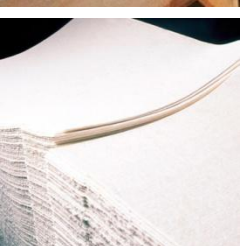
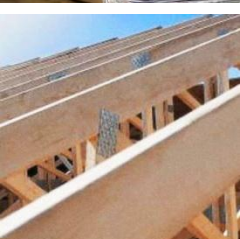


- Among the largest recyclers of old newspapers and magazines in the world
- Nearly 2.4 million metric tons of old newspapers, magazines and telephone directories diverted from landfills in 2008
- Producer of more than 40 grades of paper with recycled content
- Recycled fiber content in newsprint grades averages 38%, above North American industry average of 34% in 2008
- Paper Retriever[®] program serves 20 metropolitan areas in North America, as well as select regions of the United Kingdom; curbside collection of recyclables also provided to more than 1.7 million U.K. homes

Stakeholder Relations

- Business success depends on positive stakeholder relationships
- Partnerships with over 50 First Nations and Native American groups in various business ventures
- Openly engaging with environmental NGOs, working cooperatively to advance mutual interest in forest sustainability
- Productive partnership with Dogwood Alliance and NRDC to enhance protection of forests on Tennessee's environmentally sensitive Cumberland Plateau





Gravure Association of America 2009 Environmental Workshop

June 18, 2009

abitibibowater.com