



Certified Softproofing at Press with Touch screen Console



2008 Gravure Premedia Conference
Naples, Florida – January 14-16, 2008



Input - OS - Workflow

Input Formats

- Single Bit Tiff (all flavors)
- Fuji Celebra / XMF
- Prinergy Agfa (CCITT G4)
- Screen Trueflow
- Harlequin PGB etc, etc ...

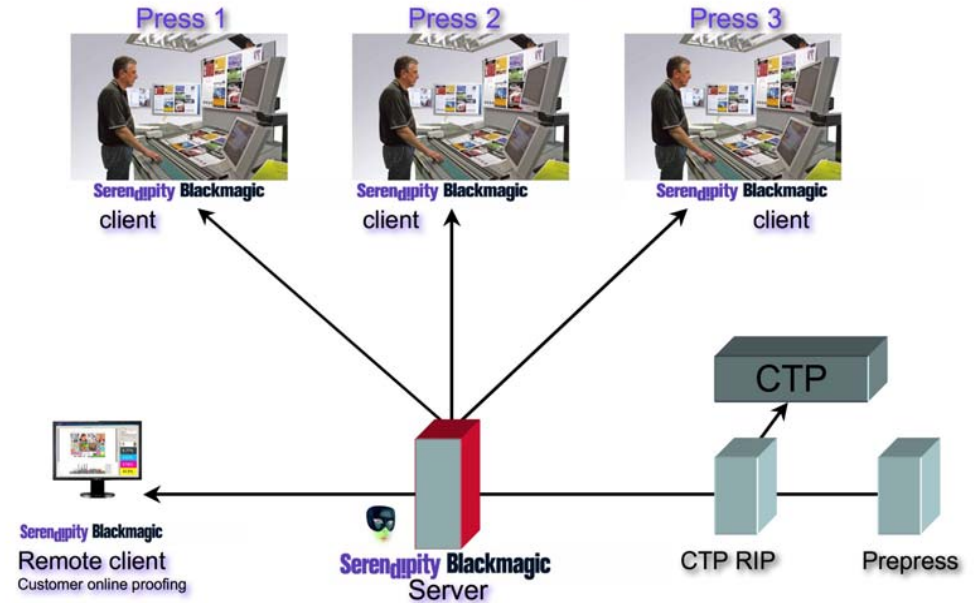
Un-Screened Formats

- Scitex Brisque Impose
- Rampage CTR
- Artwork Systems PSTI
- PDF (With Spot Plates)

Operating Systems

- Server Based Software with Unlimited Clients
- Windows - Mac OSX - Linux
- Supports multi core processors & clustered computers

On-press softproofing workflow



2008 Gravure Premedia Conference
Naples, Florida – January 14-16, 2008



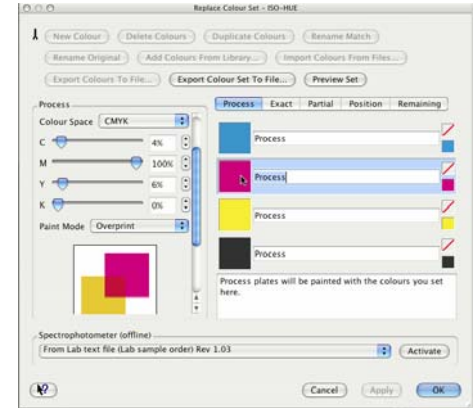
Color Management

Monitor Calibrator

- Built in ICC calibrator to each press console Client
- Built in auto-reminder (4 displays per press console)

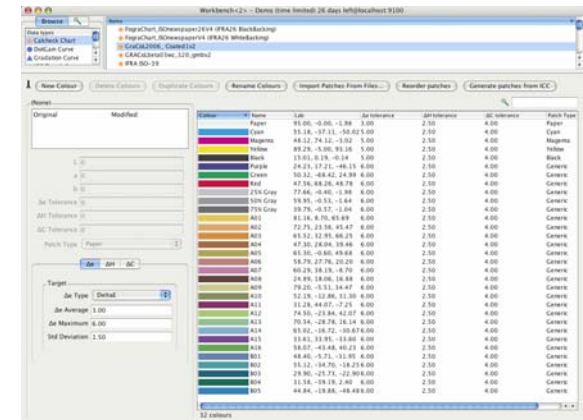
ICC Profiles

- Uses ICC press profiles for mapping output color accuracy
- HUE Error Correction tools
- LUT / Grey Balance correction curves
- Dot Gain controls (Front & Back Side)



Paper Background Simulation

- Measure paper background with online instruments
- Use the paper background from the ICC profile



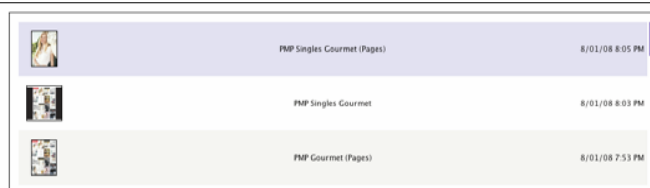
Monitor Certification

- Calcheck Charts created from industry standard ICC
- Calcheck measures the monitor ICC profile against the Press ICC profile
- Established as PASS / FAIL criteria
- User defined tolerance
- Uses the same Calcheck Chart at the customers site with a BM "Client"

2008 Gravure Premedia Conference
Naples, Florida – January 14-16, 2008



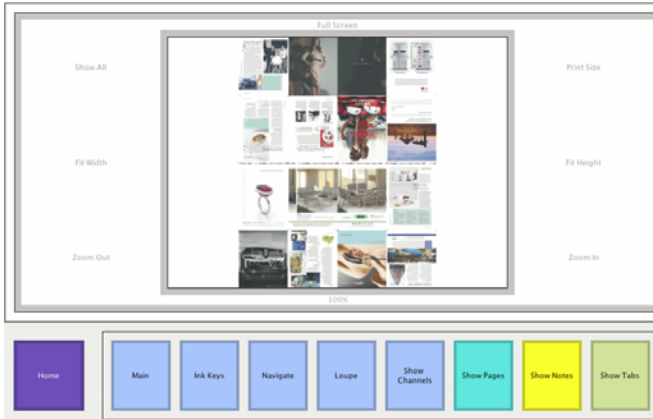
Ease Of Operation



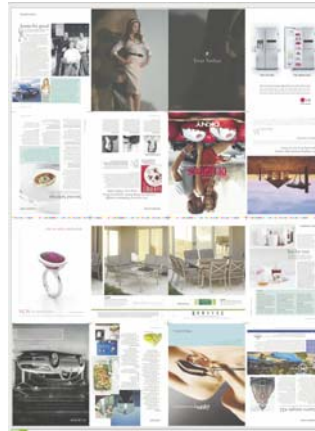
1. Scroll and select the job



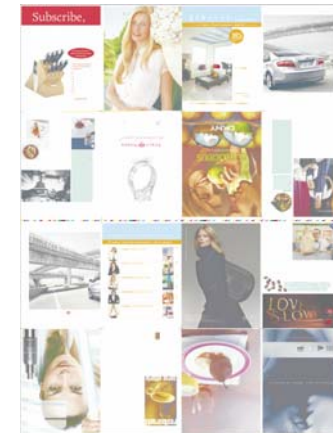
2. Select View Render



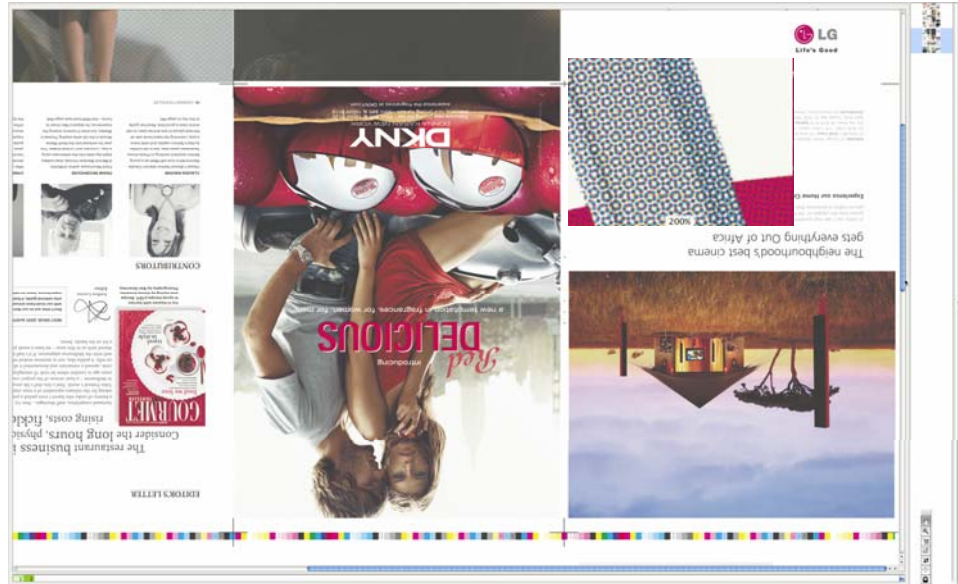
3. Select Navigator



4. Select Fit Height



5. Check Black Overprints



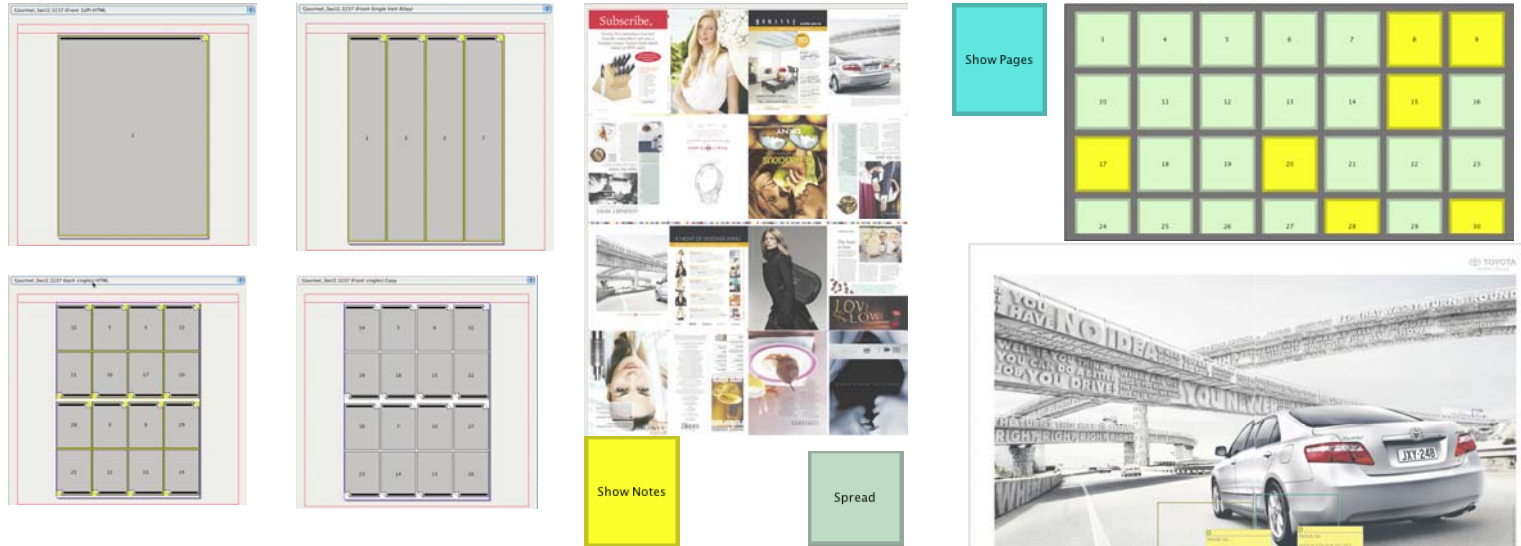
6. Select Print Size

7. Select "LOUPE"



2008 Gravure Premedia Conference
Naples, Florida – January 14-16, 2008

Reader Spreads Display



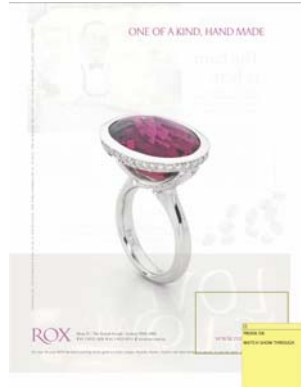
- **Import Signature Templates**
Preps, JDF, Dynastrip, Krause, Facills
- **Use De-Impose to split into single pages**
- **Spreads show single pages as side by side**
- **Notes show messages from pre-press**
- **Show Pages allows any pair to be selected**
- **Green tab shows all single and paired pages**

2008 Gravure Premedia Conference
Naples, Florida – January 14-16, 2008

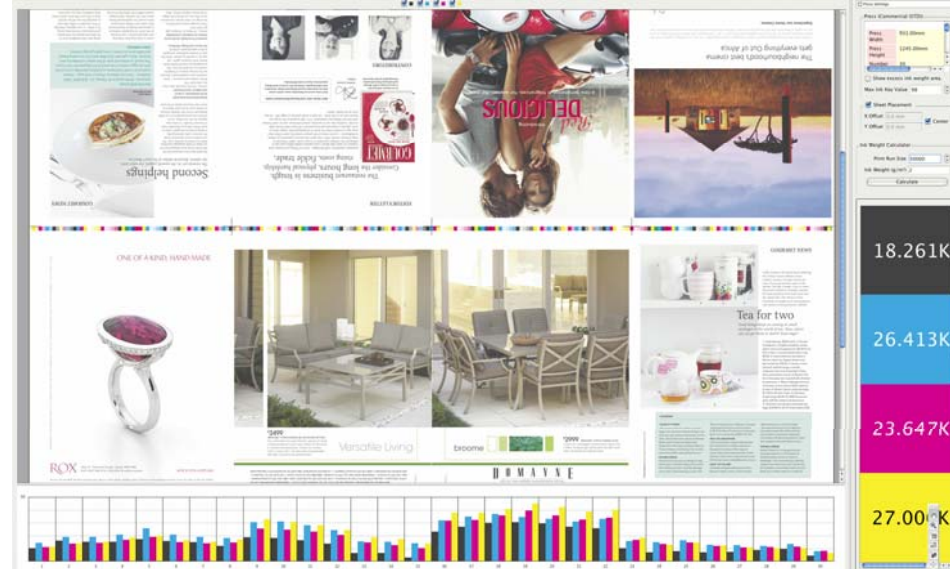


Reverse Page Viewing - Ink Key Viewer

- Opacity setting for gsm stocks
- Displays show through effect



- Displays the ink key settings
- Displays excess ink
- Ink weight calculator
- Displays individual plate ink coverage



2008 Gravure Premedia Conference
Naples, Florida – January 14-16, 2008



Benefits - End Users

Certified Softproofing Benefits

- Removes the need for hard copy proofing
- Eliminates cost of couriers, materials and time
- Traps any last minute prepress problems
- Printer sees complete job both sides as it should print
- Proof & Viewing in seconds
- One off investment without click charges

US & European Newspaper Magazine

- San Antonio Express adds Veripress technology to 6 of their latest Goss web presses
- NDC & PCM Amstel in Holland have now converted from inkjet to softproofing on press
- Major UK newspaper, publishers and printers are now looking to close out inkjet
- For controlled softproofing with certification both at the publisher and print sites



2008 Gravure Premedia Conference
Naples, Florida – January 14-16, 2008